

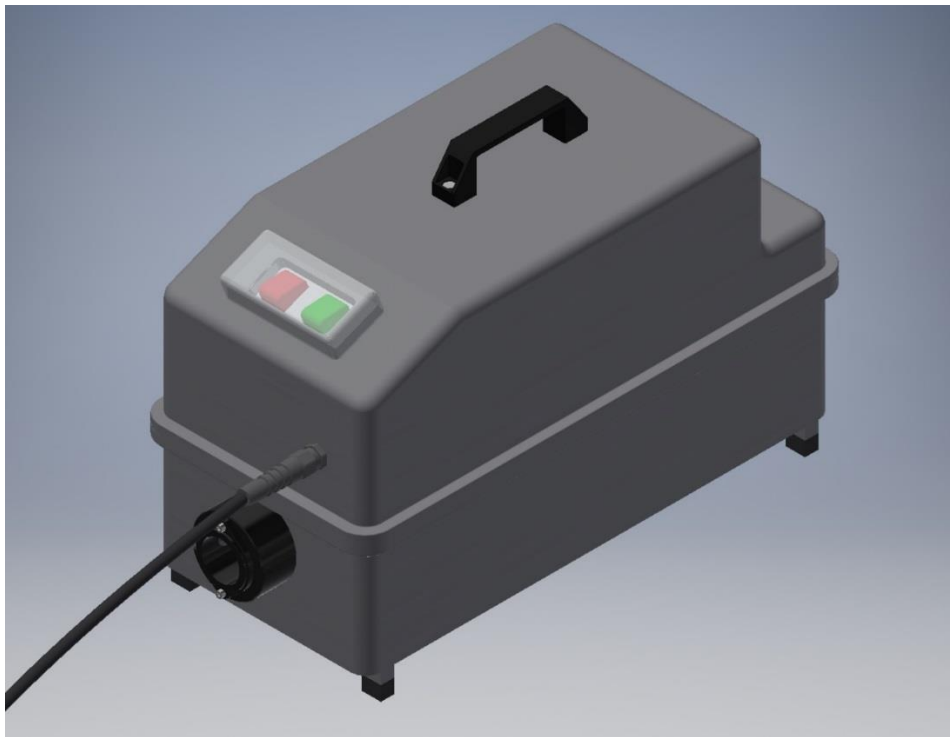


GE 2000-65

INSTRUCTION MANUAL

Catalog Number

K6131100



WARNING: READ THIS MANUAL BEFORE OPERATING THE PRODUCT

SAVE THIS INSTRUCTION MANUAL FOR REFERENCE

WARNING! Read all instructions before operating the inflator. Failure to follow all instructions listed below may result in product damage, and/or serious injury.

SAVE THESE INSTRUCTIONS

WARNINGS:

1. Read these instructions.
2. Keep these instructions.
3. Protect the cord from being walked on or pinched.
4. Refer all servicing to qualified service personnel. Servicing is required when the apparatus has been damaged in any way.
5. Don't disassemble the product. Incorrect reassembly may result in a risk of Short Circuit.
6. Keep this product out of the reach of children.

DO NOT SUPPLY THE INFLATOR AT HIGHER OR LOWER VOLTAGE THAN NOMINAL. STD VOLTAGE IS 230 VAC, 50 Hz

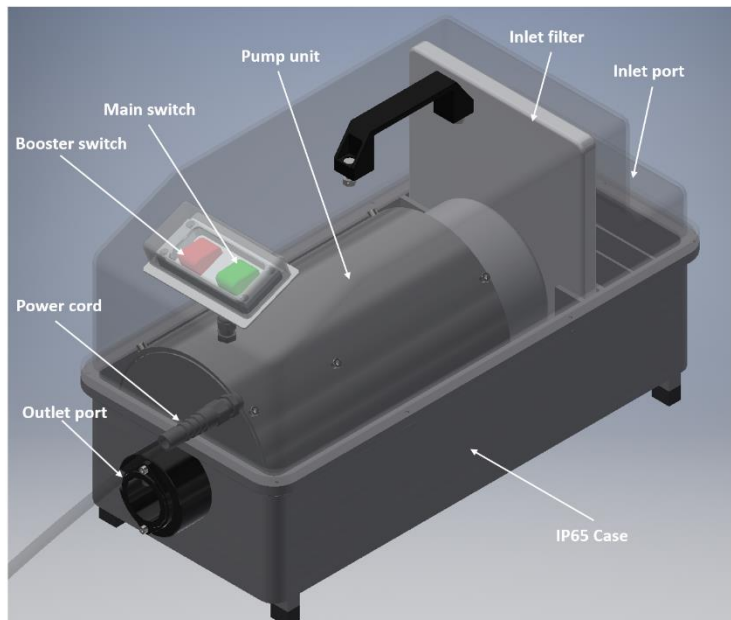
GENERAL SAFETY RULES

1. **CONSIDER WORK AREA ENVIRONMENT.** Don't expose the device to heavy rain. Don't use in presence of flammable liquids or gases.
2. **DON'T ABUSE CORD.** Never carry device by cord or yank it to disconnect from receptacle. Keep cord from heat, oil, and sharp edges.
3. **STAY ALERT.** Watch what you are doing. Use common sense.
4. **CHECK DAMAGED PARTS.** Before further use of the device, a guard or other part that is damaged should be carefully checked to determine that it will operate properly and perform its intended function.
5. **DO NOT OPERATE** portable device near flammable liquids or in gaseous or explosive atmospheres.
6. **WARNING! RISK OF UNSAFE OPERATION.** Do not modify or attempt to repair. Never drill into or make any modifications to the device or its attachments.

INTENDED USE

GE 2000-65 is a professional inflator designed for the inflation (and deflation) of big inflatable structures. This pump is suitable for outdoor use.

1. **THE UNIT HAS A PROTECTION DEGREE THAT ALLOWS TO INFLATE AND OPERATE EVEN DURING RAINING CONDITIONS OR IN PRESENCE OF DUST.**
2. **THE INFLATOR IS PROVIDED WITH HOSES AND ADAPTORS TO BE CONNECTED TO THE MOST COMMON INFLATION VALVES**
3. **THE INFLATOR IS FITTED WITH THERMAL OVERLOAD SWITCHES THAT WILL INTERVENE IN CASE OF OVERHEATING. NORMAL OPERATION WILL RESUME AUTOMATICALLY AFTER A PAUSE OF 20/40 MINUTES**



MAIN CHARACTERISTICS

- | | |
|----------------------|--------------------------------------|
| 1. Supply Voltage: | 210-240 Vac; 50 Cycles |
| 2. Max. Power | 2500 W |
| 3. Max pressure | 200 mbar (500 mbar with Booster) |
| 4. Max Flow rate | 1200 l/min (2500 l/min with Booster) |
| 5. Dimensions | L700; W250; H350 (mm) |
| 6. Mass | 15 Kg |
| 7. Protection Degree | IP65 according to IEC standard 60529 |

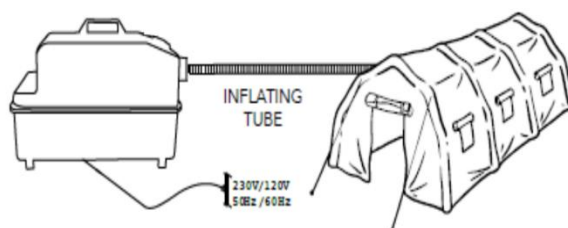
USE OF GE 2000-65

TO INFLATE:

1. Connect the Inflating tube to the Outlet Port of the GE 2000-65 and to the inflatable using the fittings provided.
2. Connect the Power Supply Plug to a 230 Vac Socket
3. Turn ON the Green Switch on the Inflator.
4. Turn ON the Reed Switch to obtain the maximum performance
5. Switch off the Green Switch when the inflatable has reached the desired pressure



CAUTION! THE INFLATOR DOESN'T STOP AUTOMATICALLY! IT'S NECESSARY TO CONTROL THE DEVICE OPERATIONS IN ORDER TO AVOID THE DANGER OF OVERINFLATION.



TO DEFLATE:

1. Connect the hose to the Inlet port using the fittings provided.
2. Turn ON the Green switch.



CAUTION! MAKE SURE THAT, DURING DEFLATION, THE UNIT WILL NOT OPERATE UNATTENDED. SWITCH OFF THE UNIT WHEN NO AIR CAN BE EXTRACTED FROM THE INFLATABLE.

TROUBLESHOOTING

Problem	Possible cause	Possible Solution
GE 2000-65 doesn't start	Power cord not connected	Connect the cable correctly.
	Main GREEN Switch OFF (0)	Turn the switch to ON. (1)
	The power cord is damaged.	Replace or repair the cable from a SCOPREGA Service Center.
Inflator Stop	Power cord not connected	Connect the cable correctly.
	Main power Switch OFF	Put the switch to ON.
	Over-temperature	Wait till the GE 2000-65 has cooled down. Operation will resume automatically

ACCESSORIES

Recommended accessories for your GE 2000-65 are available from your dealer.



WARNING: USE OF ACCESSORIES NOT RECOMMENDED FOR THIS PRODUCT CAN BE DANGEROUS.



GE 2000-65

MADE IN ITALY by



www.scoprega.it