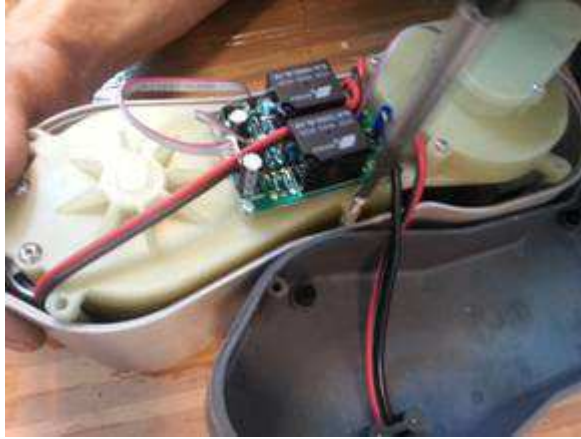
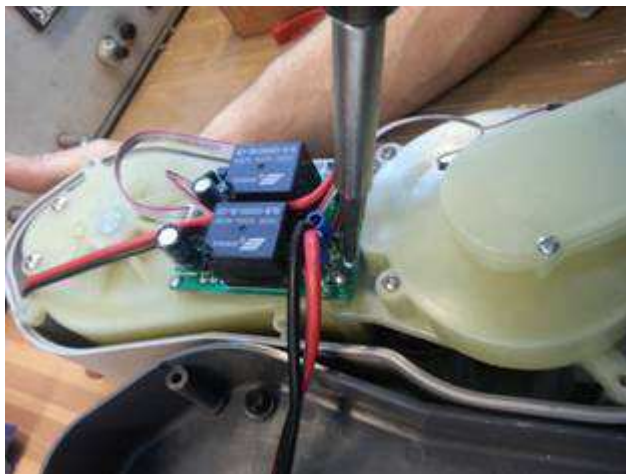
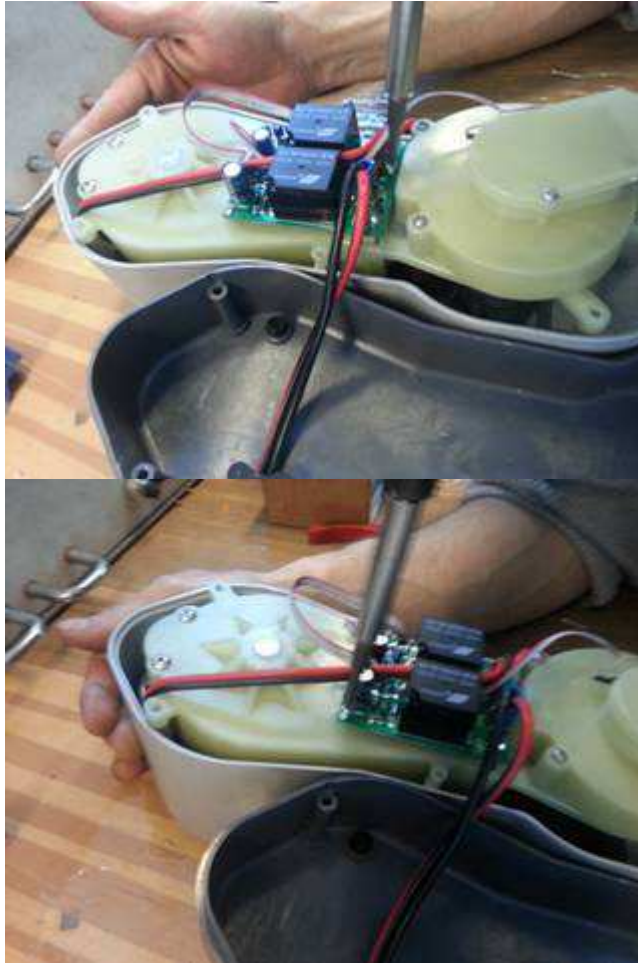


Open the pump and unscrew the 2 parallel screws at the sides of the circuit board:

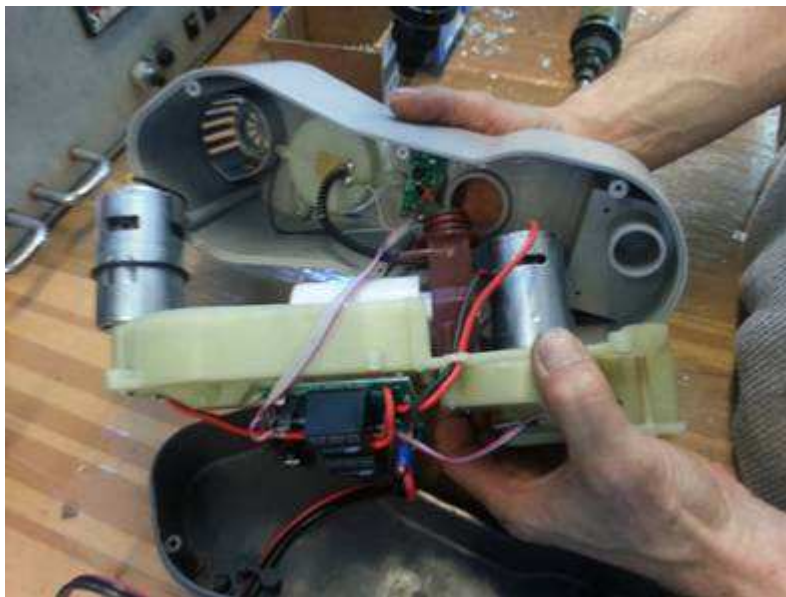


Then unscrew the 4 screws on the circuit board, as following:





Remove the block:



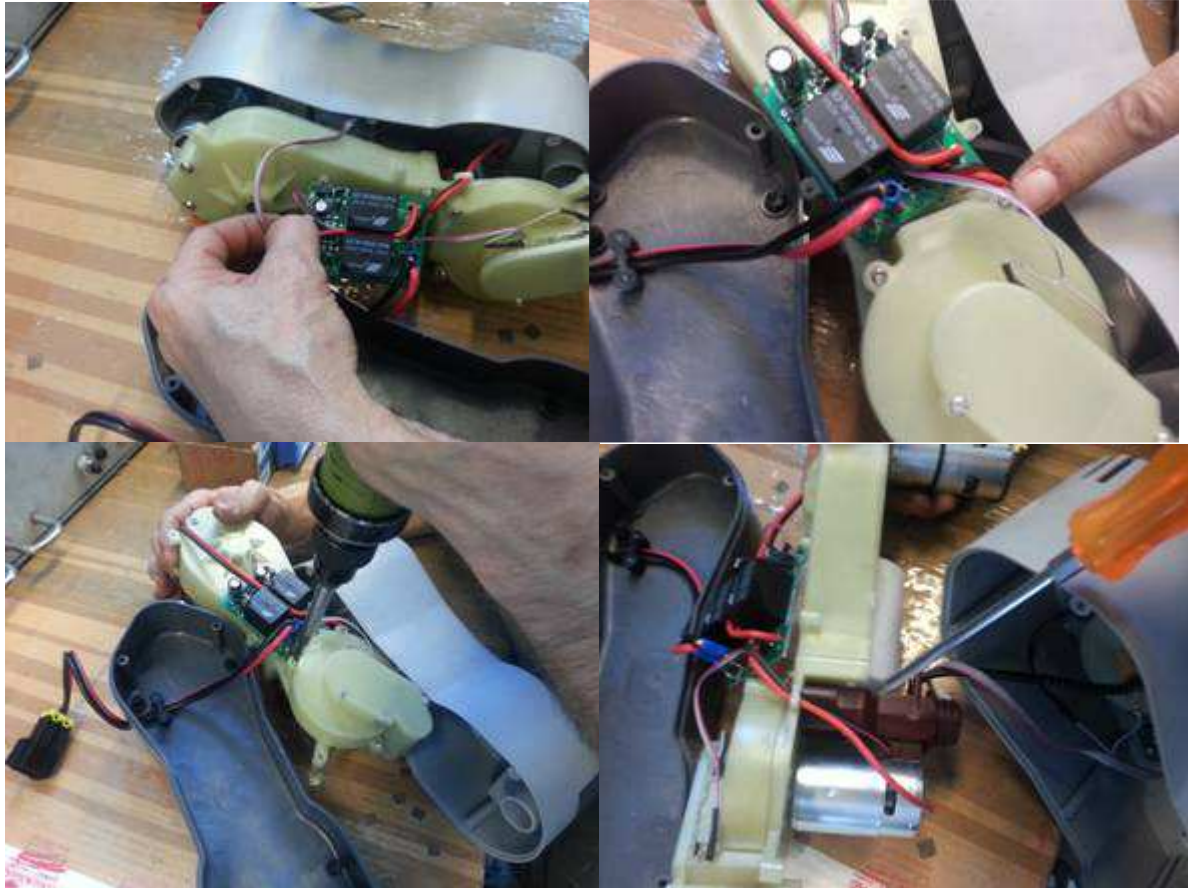
IBS Boat Supplies

Fambridge Yacht Station, Ferry Road, North Fambridge, Chelmsford, Essex, CM3 6LS

Telephone: 01621 744250 Fax: 01621 744570

Email: Info@ibs-boats.com Website: ibsboats.co.uk

Move the circuit board and unscrew the screws which keep the red block:



Unscrew the main central screw of the gear:

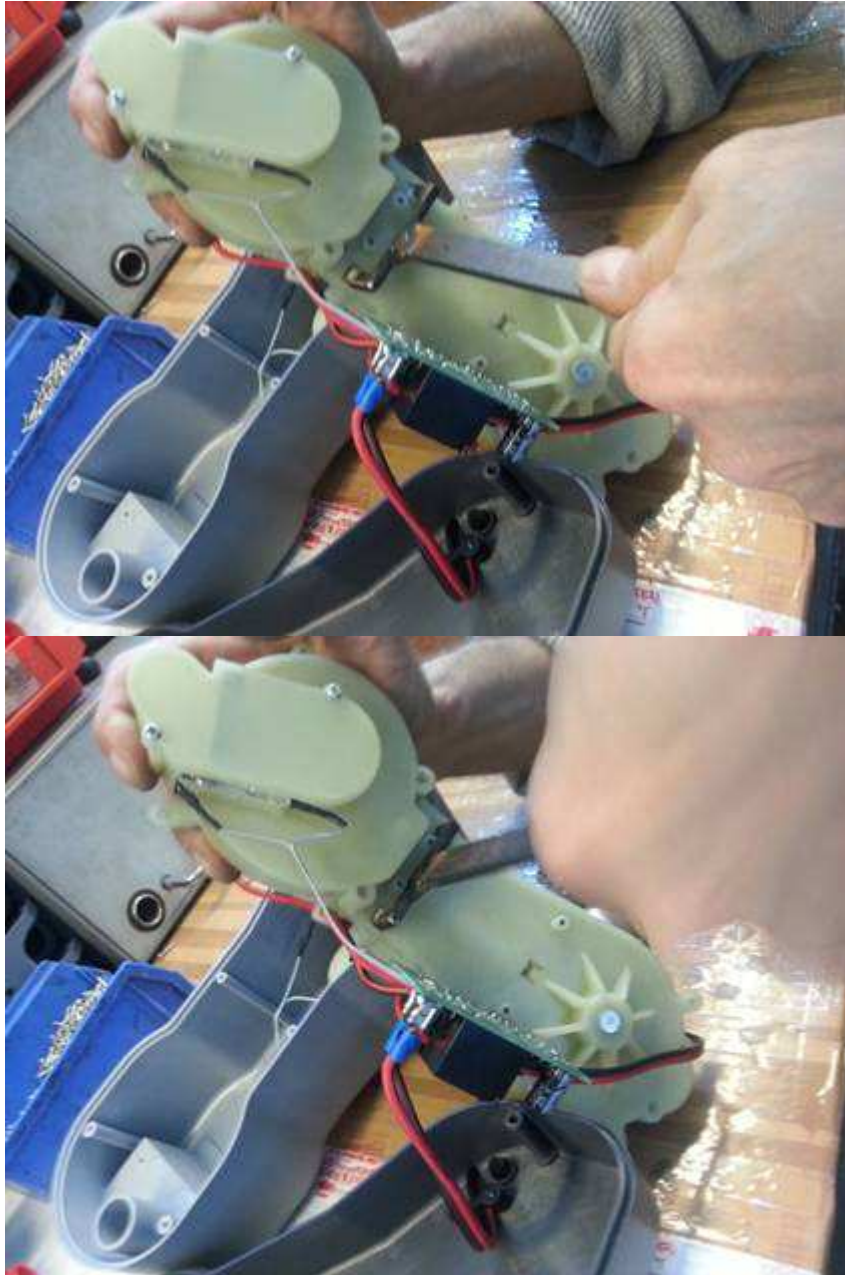


Remove the motor: unscrew where shown below and separate the motor:



Separate the piston/gear block from its plastic seat by pushing simultaneously the tabs below:

(we have a particular tool, as you can see, but you can do it with 2 crew-drivers)



Remove and replace the piston/gear block:

keep the original red part of the pump, and to replace only the piston/gears.

